

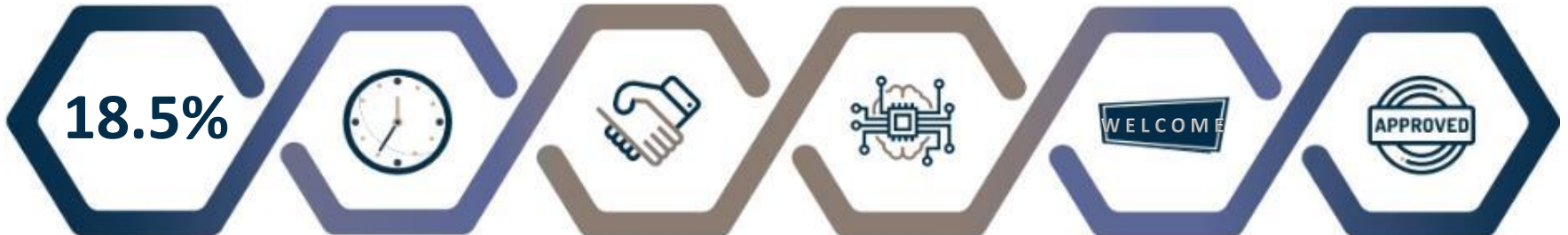
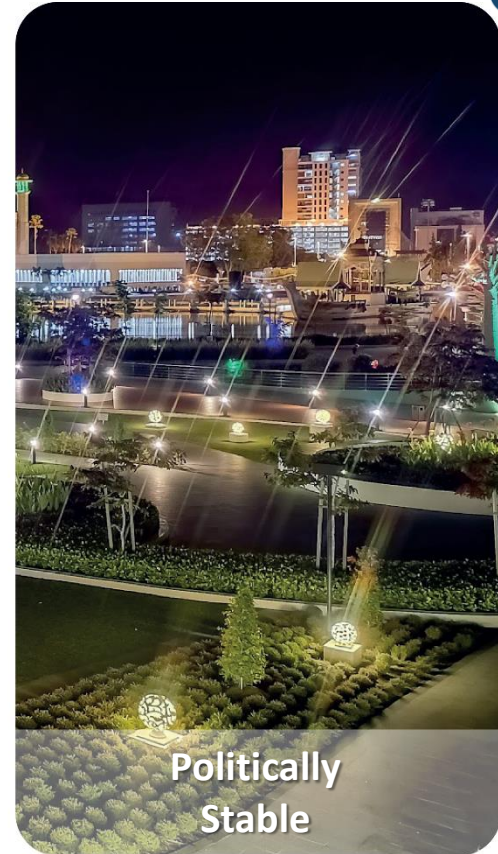
**INVEST
BRUNEI
DARUSSALAM**

“Together We Flourish”

www.invest.gov.bn

WHY INVEST IN BRUNEI DARUSSALAM

INVEST
BRUNEI
DARUSSALAM



Favourable
Tax Regime

Ease of Doing
Business Reform

Credible
Partnership

Intellectual Property
Protection

Up to 100%
Foreign Ownership

Complete
Facilitation

QUALITY LIVING

INVEST
BRUNEI
DARUSSALAM



GLOBAL CONNECTIVITY



GLOBAL CONNECTIVITY

INVEST
BRUNEI
DARUSSALAM

Partner Shipping Line

 MAERSK LINE Maersk Line	 PIL Pacific International Lines	 EVERGREEN GROUP Evergreen Group	 COSCO SHIPPING China Ocean Shipping Company
 MTT MTT Shipping Sdn. Bhd.	 AMANN SHIPPING Amann Shipping Sdn Bhd	 Hapag-Lloyd Hapag-Lloyd	 OOCL Orient Overseas Container Line
 APL APL	 ACL ACL Cargo	 CMA CGM CMA CGM Group	 Harbour Harbour Link Line Sdn Bhd
 NYK LINE NYK LINE	 K LINE K LINE	 MOL Mitsui O.S.K. Lines	 MSC Mediterranean Shipping Company



WAWASAN BRUNEI 2035: OUR NATIONAL VISION

INVEST
BRUNEI
DARUSSALAM



DYNAMIC & SUSTAINABLE ECONOMY

Top 10 Countries
In The World
In Terms Of
Income Per Capita



HIGH QUALITY OF LIFE

Top 10 Countries
In The World
According To The
UNDP Human
Development Index



EDUCATED, HIGHLY SKILLED & ACCOMPLISHED PEOPLE

Based On The
Highest
International
Standards

WAWASAN BRUNEI 2035

GOAL 1

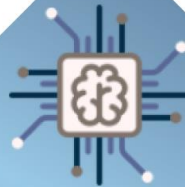
GOAL 2

GOAL 3

PRIORITY INVESTMENT CLUSTERS



**Oil & Gas
Downstream**



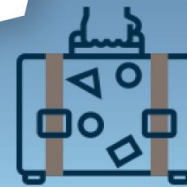
ICT



Services



Food



Tourism

HOW TO INVEST INTO BRUNEI DARUSSALAM

INVEST
BRUNEI
DARUSSALAM

STEP
1

SUBMIT YOUR INVESTMENT PROPOSAL

To FDI Action & Support Centre (FAST), Brunei Economic Development Board (BEDB)

STEP
2

EVALUATION & APPROVAL OF YOUR INVESTMENT PROPOSAL

By FDI & Downstream Industry Working and Steering Committee

STEP
3

RECEIVE COMPLETE FACILITATION & AFTERCARE

From FAST, BEDB

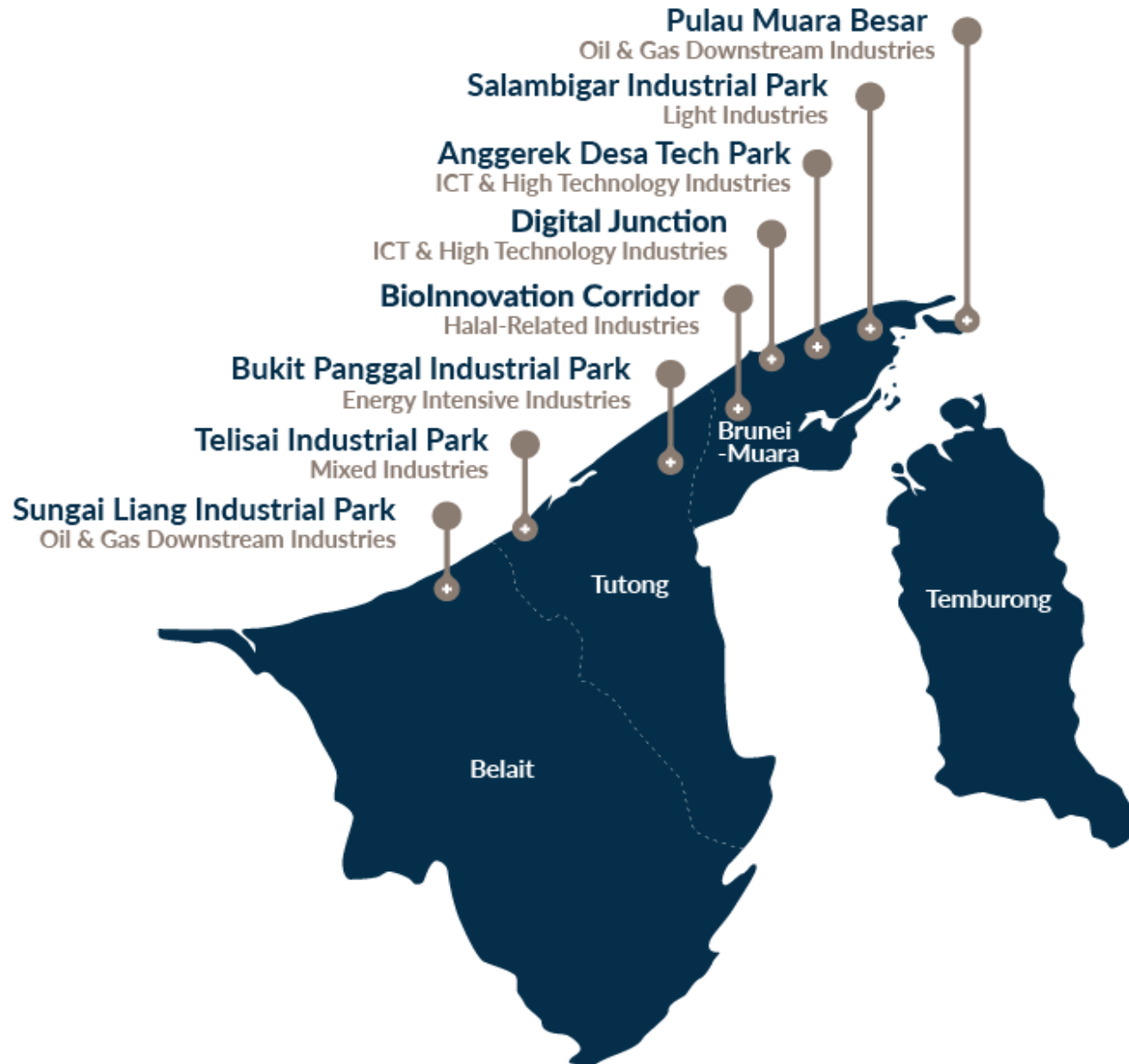
ESTABLISHED INTERNATIONAL COMPANIES

INVEST
BRUNEI
DARUSSALAM

بروني
BRUNEI



MAIN INDUSTRIAL SITES



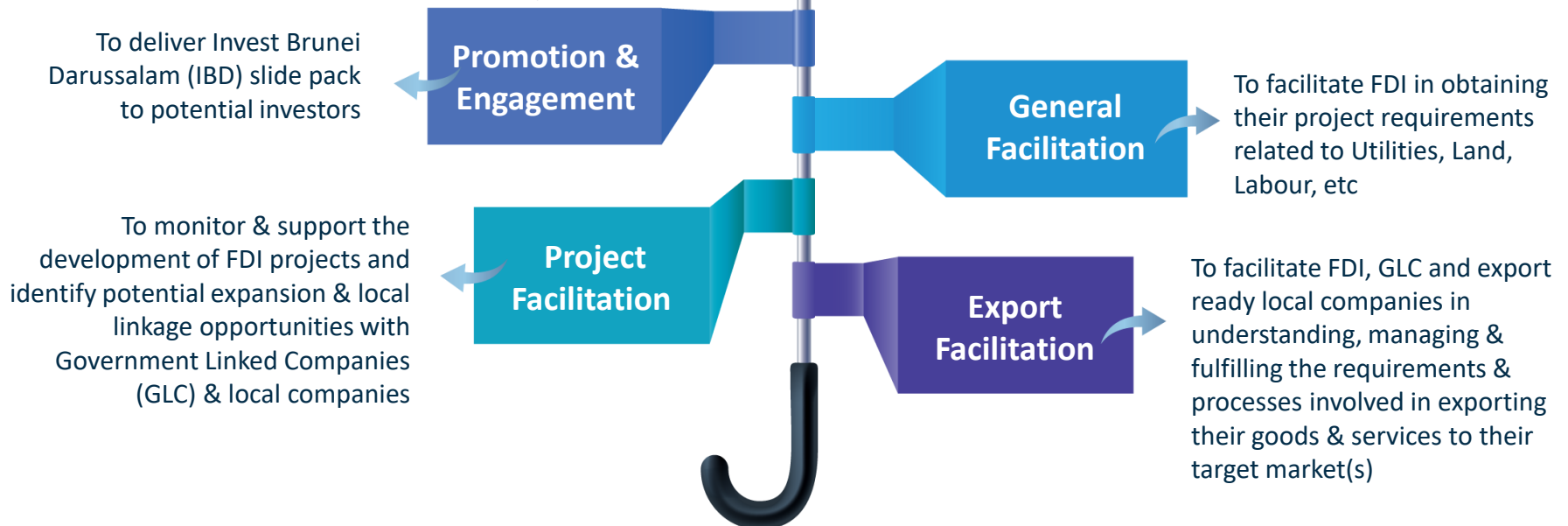
All industrial sites are within close proximity to main sea port and international airport

MINISTRY OF FINANCE & ECONOMY (MOFE) OBJECTIVE

To engage & support more value added Foreign Direct Investment (FDI) in Brunei Darussalam

FAST ROLES & RESPONSIBILITIES

- To facilitate pre investment & post approved FDI
- To co-ordinate with relevant Government & private stakeholders to assist FDI with the successful development of their projects in Brunei Darussalam



ありがとうございました شڪرا 謝謝

TERIMA KASIH THANK YOU

धन्यवाद JE VOUS REMERCIE

FDI Action & Support Centre (FAST)
Brunei Economic Development Board (BEDB)



www.invest.gov.bn



Info@invest.gov.bn

INVEST BRUNEI DARUSSALAM

“Together We Flourish”

www.invest.gov.bn



WHY INVEST IN BRUNEI DARUSSALAM

CONDUCTIVE BUSINESS ENVIRONMENT

- ▶ Clean & Green
- ▶ Strategically Located
- ▶ Politically Stable
- ▶ Favourable Tax Regime
- ▶ Ease of Doing Business Reforms
- ▶ Credible Partnership
- ▶ Intellectual Property Protection
- ▶ Up to 100% Foreign Ownership
- ▶ Complete Facilitation and Support

WHO WE ARE

With the establishment of the Foreign Direct Investment and Downstream Industry (FDIDI) Steering Committee, the FDI Action and Support Centre (FAST) was formed in November 2015 to provide complete facilitation to investors in meeting their project requirements. In May 2019, FAST became part of the Brunei Economic Development Board (BEDB), a Statutory Body under the Ministry of Finance and Economy (MOFE).

Talk to our specialists - Whether you are involved in Oil & Gas Downstream, Food, Tourism, Services or Information & Communications Technology, we have specialists in your sector who will be able to guide you through your investment journey.

Once you are interested and have engaged with us, the FAST team assigned to you will put together an itinerary for a visit to Brunei Darussalam. This will be based on the time you have, your project, needs, interests and concerns.

FAST FREQUENTLY ASKED QUESTIONS (FAQ)

Business Environment	3
Starting Or Acquiring A Business In Brunei Darussalam	4
Construction and Connection to Utilities	5
Employment	9
Import, Export And Taxation	13
Logistical Services	21

What is the population growth rate in Brunei Darussalam? What is the working age population?

Brunei Darussalam's total population stands at 422,678, according to the 2016 Population and Housing Census Update. In the 2011 Population and Housing Census, the country's population was estimated at 393,372. During the 2011-2016 period, the Sultanate's population registered an average annual growth rate of 1.4%.

Brunei Darussalam's total population of 422,678 is made up of 216,832 males (51.3%) and 205,846 females (48.7%).

In 2016, about a quarter of the population (22.3% or 94,239 persons) were below 15 years of age, more than two-thirds (71.8% or 303,618 persons) were in the working age group of 15-64 years and 5.9% (24,821 persons) were aged 65 years and above. The working age population (aged 15 years & over) was 310,400, of which slightly more than one-half (51.4%) were male. The labour force participation rate was 65.6%, however the rate for males was considerably higher than that for females (by a difference of 14.1%). Out of the total labour force of 203,600, temporary residents (non-local) accounted for one-quarter.

What is Brunei Darussalam's currency?

The currency used is the Bruneian Dollar (BND or B\$) which is on par and interchangeable with the Singapore dollar (SGD). This stability has allowed for minimal exchange rate fluctuations.

STARTING OR ACQUIRING A BUSINESS IN BRUNEI DARUSSALAM

Is it a requirement to engage the services of a professional firm for registering a new company?

No. Investors can incorporate a company without engaging the service of a professional firm. Further guidance is provided at www.mofe.gov.bn.

What are the steps to incorporate a business in Brunei Darussalam?

All companies must be registered with the Registry of Companies and Business Names (ROCBN), Ministry of Finance and Economy. Setting up a business can be done online in a single step, by creating and logging into an account at www.roc.gov.bn, complete the application form for a flat fee of B\$300.00 (establishing a Sendirian Berhad – Private Limited) and upload the required documents for business registration or company incorporation.

Payment of the registration fee is then made before submitting the application online. Once the application has been processed and approved, the Company Incorporation Certificate or Business Registration Certificate will be sent via email within one working day.

What are the requirements for a company shareholder and director?

A company must have at least 2 shareholders and at least 2 directors. If there are only 2 directors, one of the directors must be an ordinarily resident. If there are more than 2 directors, at least 2 of them must be an ordinarily resident. Being considered an ordinarily resident requires a person to be physically present or who exercises an employment in Brunei Darussalam for 183 days or more (non-consecutive) during the year preceding the year of assessment.

How do I apply to be an Ordinarily Resident?

You will need to make the application to the Ministry of Finance and Economy. The Ordinarily Resident application and guidelines are available at the ROCBN Division, Ministry of Finance and Economy or on their website www.mofe.gov.bn

CONSTRUCTION AND CONNECTION TO UTILITIES

What is the cost of power per kWh?

Tariffs vary depending on Power Purchase Agreement with utility provider. Generally, industrial sectors would adopt these rates: (Commercial /Industrial Sector – Block pricing)

The Basic Calculation formula is as follows:

The First 10 Units	[10 Units x kVA]	x B\$0.20 cents
The Second 100 Units	[100 Units x kVA]	x B\$0.07 cents
The Third 100 Units	[100 Units x kVA]	x B\$0.06 cents
Remaining Units (if applicable)		x B\$0.05 cent

Example:

Monthly Power consumption (kWh)	= 26,880 kWh
Subscribed capacity (kVA)	= 140 kVA

Bill charged for that particular month:

1 st 10 Units	[10 Units x 140 kVA] x B\$0.20 cents	B\$280.00
2 nd 100 Units	[100 Units x 140 kVA] x B\$0.07 cents	B\$980.00
Remaining Units	26,880 – [(10 x 140) + (100 x 140)] x B\$0.06 cents (26,880 – 15,400) x B\$0.06 cents	B\$688.80
Bill charged	B\$280.00 + B\$980.00 + B\$688.80	B\$1,948.80

For more information, please refer to :

<http://www.des.gov.bn/SitePages/Electricity%20Tariff.aspx>

How much gas is available to investors and at what price?

This would depend on the volume of gas required for the project and discussions can be held with the respective gas providers to confirm availability. The price of gas is open to negotiation on a case by case basis, weighed up against socioeconomic benefits and scale of the project.

CONSTRUCTION AND CONNECTION TO UTILITIES

If there is no pipeline connection to the land, what is the possibility of resourcing LPG/NLG with tanker trucks?

LPG is produced by Brunei Liquefied Natural Gas (BLNG) and sold by Brunei Shell Marketing Company Sdn Bhd (BSM). Facilitation can be made available for proponents to discuss any specific requirements directly with BLNG and/or BSM.

What are the risks of the shortage of gas fuel supply?

The respective utility providers BLNG/BSM, Department of Water Services and Department of Electrical Services provide their services to all industrial/commercial and residential customers in the country. Depending on the project's specific requirements, detailed discussions can be held with the respective providers on quantity, reliability specifications to meet the project needs.

What is the cost of water supply?

Temporary supply (during construction phase) – B\$1.10/m³

Light Industry – B\$0.66/m³

(Source: Department of Water Services (DWS), Ministry of Development)

What is the arrangement for effluent treatment?

Effluents shall be treated to the allowable limits before discharge into a public sewer or watercourse. The recommended standards for industrial effluents can be found in the Code of Practice.

Link:

http://www.env.gov.bn/SiteCollectionDocuments/Environmental%20Guidelines/industryguideline_brunei.pdf

CONSTRUCTION AND CONNECTION TO UTILITIES

Do local sewers exist or would effluent need to be tankered away from an industrial site?

Companies can connect into the existing sewers system. However, cost will depend on the type of waste materials and effluent (content of waste, amount etc).

What are the obligations for waste water treatment for the plant?

The tenant is required to specify their methodology or procedures to dispose the said waste for authorities' assessment. Disposal of solid waste, chemicals or liquids directly to the drains is strictly prohibited.

Projects on Darussalam Enterprise (DARE) industrial land are expected to conduct Environmental Appraisals, Environmental Impact Assessments and Studies as appropriate to the complexity and environmental impacts of the project.

Tenants and their Projects and Main Contractors are expected to develop and implement Constructions and Operations phase Environmental Management Plans as appropriate to the complexity and environmental impacts of the project, facility or activity.

Are there any environmental or sustainability restrictions associated with manufacturing?

It is required for companies to undertake an Environmental Impact Assessment (EIA) and Environmental Monitoring and Management Programme (EMMP) prior to the start of their project. More information on environmental acts in Brunei Darussalam are available on the following website: <http://www.env.gov.bn/Theme/Home.aspx>

CONSTRUCTION AND CONNECTION TO UTILITIES

What is the approximate cost of setting up a factory?

This will depend on the size and design of the facility. The price will likely range from \$55.00 to \$100.00 per square metre. For accuracy, it is advisable to seek quotations from local contractors.

What are the requirements for the assigned construction company?

A local Qualified Person (QP) is required to be appointed, who will ensure that all drawings, etc. meet the guidelines. However, if it is highly specialized and there are no local contractors able to build the facility then a foreign owned company can be appointed. The list of local QP registered with the Ministry of Development can be found on the following link:

<http://bapeqs.gov.bn/SitePages/Authorised%20Practitioner%20Services%20in%20Brunei%20Darussalam.aspx>

What are the rules related to a building approaching limits of the boundary of the land?

The setback distance measured from the lot boundary to the building roof line is generally 6 metres. There are also further Primary & Secondary buffers required based on activities within the plot.

All development shall comply with requirements set in the DARE Industrial Park Guidelines and land uses are required to comply with the Standard Design Guidelines for Industrial Development by Town and Country Planning, Ministry of Development, Brunei Darussalam.

EMPLOYMENT

What is the average monthly salary for industrial labour?

Minimum Daily Wage for Workers

Currently, there is no minimum wage legislation in Brunei Darussalam. It is subject to negotiation and mutual agreement between an employer and employee.

Average Market Rates

Unskilled workers B\$20.00 per day

Semi-skilled workers B\$20.00 – B\$27.00 per day

Skilled workers B\$27.00 – B\$35.00 per day

Position	Average Monthly Salary
Manager: Entry Level	B\$2,000
Middle Level	B\$3,000
Senior Level	B\$4,500
Accountant	B\$1,200
Office Clerk	B\$300 – B\$500
Secretary	B\$1,000 – B\$1,300
Store Supervisor	B\$650
Constructor Supervisor	B\$1,000
Laboratory Technician	B\$800 – B\$1,200
Mixing Machine Operator	B\$800
Plant Maintenance Mechanic	B\$800
Packer	B\$350 – B\$400
Driver	B\$500 – B\$650
Janitor	B\$500
Quality Control Inspector	B\$800
Labourers	B\$350 – B\$500

Source: Labour Department

EMPLOYMENT

Hours of work per day/week

- For a non-shift worker, the hours of work shall not be more than 8 hours a day or more than 44 hours a week.
- For a shift worker, the hours of work shall not be more than an average of 44 hours a week over any continuous period of 3 weeks subject to a maximum of 12 hours a day.

Paid Annual Leave

It will depend on the employment contract, however on average, employees are given up to 14 days of Annual Leave (excluding days off and Public Holidays).

Paid Maternity Leave

All citizen and permanent resident female employees are entitled to 15 weeks of paid maternity leave.

What are the total additional employment costs that would need to be paid in addition to the salary?

Payment of Overtime

Depending on the employment contract, overtime pay may be paid at a rate of not less than 1.5 the normal rate of pay for weekdays and 2.0 the normal rate for weekends/public holidays.

Employees Provident Fund

Employers and local employees are required to contribute to a provident fund known as the Employees Provident Fund (TAP). Employees contribute 5% of their salaries and overtime and employers contribute a further 5%. In addition, all employees are required to contribute to the Supplemental Contributory Pension Scheme (SCP), which is a further 3.5% of the employee's salaries and overtime and an equal 3.5% contribution from the employer, up to a maximum of B\$98.00 per month.

Medical Check-up

It is generally expected for the employer to bear the cost of employment check-ups for their employees.

Insurance

Employers are required to cover the employees with insurance such as Workmen Compensation. Employers may offer other types of insurance as part of their welfare package.

Are there any restrictions on expatriate employees in Brunei Darussalam?

Brunei Darussalam encourages companies to consider hiring local employees who have the expertise and/or work experience. This can be done by advertising in the local newspapers or media platforms, and via JobCentre Brunei at www.jobcentre.gov.bn. However, if there are no suitable candidates for the said position(s), employers may proceed to apply for a work permit to engage foreign employees:

<http://www.labour.gov.bn/SitePages/Services%20-%20LPA.aspx>

Are there any restrictions on operating hours?

There is no restriction on operating hours for a factory. There are, however, guidelines for an employee's working hours.

For a non-shift worker, the hours of work shall not be more than 8 hours a day or more than 44 hours a week.

For a shift worker, the hours of work shall not be more than an average of 44 hours a week over any continuous period of 3 weeks subject to a maximum of 12 hours a day.

More details can be found:

<http://www.labour.gov.bn/Download/GUIDE%20TO%20BRUNEI%20EMPLOYMENT%20LAWS%20-%20english%20version-3.pdf>

Are there any restrictions regarding the availability of skilled labour?

The Government of Brunei Darussalam has introduced the i-Ready Apprenticeship scheme whereby companies can employ graduates from the Technical and Vocational Education and Training (TVET) Level 2 up to Degree/Masters levels in various fields. While funded by the Government for a maximum period of 18 months, the host company shall provide capacity development through on-the-job and other forms of training to equip the apprentices with the necessary skills and knowledge to execute their roles. For more information on the scheme, please refer to <https://jobcentrebrunei.gov.bn/i-ready>

IMPORT, EXPORT AND TAXATION

What are the import duties into Brunei Darussalam?

Items are categorized and are imposed different tariff rates. Further information on tariffs can be found here:

<http://www.bdntr.gov.bn/SitePages/home.aspx>

<https://tradingacrossborders.mofe.gov.bn/Downloadable/BDTTC%202017.pdf>

What are the Brunei Darussalam's Free Trade Agreement (FTA)?

To date, Brunei Darussalam has concluded FTAs through ASEAN with Australia and New Zealand, China, India, Japan, and South Korea and one Bilateral Agreement, Brunei – Japan Economic Partnership Agreement. Selected imported and exported goods are subject to a reduction or elimination of custom duties (Preferential Tariffs), provided that the goods meet the Rules of Origin for the relevant FTA. Brunei Darussalam is also a member of WTO and APEC, and has multiple economic cooperation.

Further details can be found here:

<http://www.mfa.gov.bn/customs-duties-and-preferential-tariffs-rates>

What is the taxation regime relating to companies' profit in Brunei Darussalam?

Corporate Income Tax in Brunei Darussalam is set at 18.5%, which is the second lowest in the region. As a comparison, Malaysia's standard corporate tax is at 24% and Indonesia stands at 25%. (Source: KPMG)

Incoming foreign companies are able to apply for the 'Pioneer Status' and if granted, they will be exempted from paying Brunei's Corporate Income Tax and import duties on Raw Materials, Equipment and Machinery for a period of up to 5 years (with further extensions of 3 + 3 years possible). However, companies assuming Pioneer Status are not exempted from any excise duty.

IMPORT, EXPORT AND TAXATION

What are the applicable licenses or permits required before the importation or exportation of any given commodity?

A License or Permit issued by the relevant Government Agency is required before the importation or exportation of any given commodity. The application is undertaken in writing via the submission of an application form to the Government Agency responsible for the regulation of particular controlled or prohibited commodity.

Types of Commodities and relevant Issuing Government Department/ Agency are as follows:

Commodity type	Government/Agency
Publication Materials / Prints, Films, Compact Disc (CD), Laser Disc (LD), Video Compact Disc (VCD), Digital Video Disc (DVD), Cassette, Recital of Al-Quran, Hadith, Religious Books, Talisman commodities (such as textiles / clothing etc.), bearing dubious chops / photos	Royal Brunei Police Force +673-2459500 info@police.gov.bn
	Islamic Dakwah Centre +673-2382525 info@pusat-dakwah.gov.bn
	Internal Security Department +673-2223225 info@internalsecurity.gov.bn
Fresh, Cold and Frozen Meat (Halal)	Agriculture and Agri-food Department +673-2380144 info@agriculture.gov.bn
	Food Safety and Quality Unit +673-2381640 info@moh.gov.bn
	Halal Import Permit Issuing Board +673-2382525 info@religiousaffairs.gov.bn
	Royal Customs and Excise Department +673-2382333 info@customs.gov.bn

IMPORT, EXPORT AND TAXATION

Commodity type	Government/Agency
Firearms, Explosives, Fire Crackers, Dangerous Weapons, Scrap Metals.	Royal Brunei Police Force +673-2459500 info@police.gov.bn
	Royal Customs and Excise Department +673-2382333 info@customs.gov.bn
Rice	Supply and State Store Department +673-2423151 info@itss.gov.bn
	Royal Customs and Excise Department +673-2382333 info@customs.gov.bn
Vehicles (including Cars, Motorcycles, Mini Buses, Pickups, Trucks and Trailers)	Land Transport Department +673-2451979 info@landtransport.gov.bn
	Royal Customs and Excise Department +673-2382333 info@customs.gov.bn
	Ministry of Foreign Affairs (Protocol & Consular Department) +673-2261177 dprocon@mfa.gov.bn
Alcoholic Beverages	Prime Minister's Office +673-2224645 info@jpm.gov.bn
	Royal Customs and Excise Department +673-2382333 info@customs.gov.bn
Timber and Timber Products	Forestry Department +673-2381013 info@forestry.gov.bn

IMPORT, EXPORT AND TAXATION

Commodity type	Government/Agency
Radio Transmitter and Receiver, Communications Equipment (such as Telephone, Fax machines, Walkie-Talkie etc), Broadcasting Equipment (such as Parabola, Decoder, etc).	Info-Communication Technology Industry (AiTi) +673-2333780 aiti@brunet.bn
Plants, Crops, Live Animals, Vegetables, Fruits, Eggs, Soil.	Agriculture and Agri-food Department +673-2380144 info@agriculture.gov.bn
Fishes, Prawns, Shells, Water Organisms and Fishing Equipment, etc.	Fisheries Department +673-2382068 info@fisheries.gov.bn
Medicines, Herbal Products, Cosmetics	Ministry of Health (Refer to the Pharmaceutical Services Department) +673-2381640 info@moh.gov.bn
Health Foods, Soft Drinks and Snacks	Ministry of Health (Refer to the Food Safety and Quality Control Unit) +673-2331100 fsqc@moh.gov.bn
Tobacco Products	Ministry of Health (Refer to the Tobacco Control Unit) +673-2381640 prohealth@moh.gov.bn
	Royal Customs and Excise Department +673-2382333 info@customs.gov.bn
Badges, Banners, Souvenirs comprising of Government Flags and Emblems, Royal Regalia, Government Flags and Crests.	Royal Custom and Tradition Department +673-2243971 info@adat-istiadat.gov.bn

IMPORT, EXPORT AND TAXATION

Commodity type	Government/Agency
Poisons, Chemicals and Radioactive Materials	Prime Minister's Office (Refer to Radiation Safety and Quality Unit) +673-2381640 <i>info@moh.gov.bn</i>
Mineral Water	Ministry of Health (Refer to the Food Safety and Quality Control Unit) +673-2331100 <i>fsqc@moh.gov.bn</i>
Cements	Darussalam Enterprise (Industrial Site's Management) +673-2384836 or +673-8363442 <i>info@dare.gov.bn</i>
Historical Antiques (made or found in Brunei Darussalam)	Museums Department +673-2244545 <i>info@museums.gov.bn</i>
Gases that are characterized as Ozone Depleting Substances (ODS), under the purview of the Montreal Protocol	Environment, Parks and Recreation Department (JASTRE) +673-2241262 <i>jastre.brunei@env.gov.bn</i>
	Ministry of Health (Refer to Pharmaceutical Services Department) +673-2381640 <i>info@moh.gov.bn</i>
Petroleum Products	Ministry of Energy +673-2384488 <i>info@me.gov.bn</i>
	Royal Customs and Excise Department +673-2382333 <i>info@customs.gov.bn</i>

<http://www.tradingacrossborders.gov.bn/TAB/downloadable/Respective%20Responsible%20Agency%20Table.pdf>

IMPORT, EXPORT AND TAXATION

What are the local operating costs that are payable as a manufacturing facility in Brunei Darussalam?

No tax on:

- Personal Income
- Sales
- Capital Gains
- Manufacturing

Tax must be withheld from payments made to a non-resident person at the following rates:

Nature of payment	Section 37 read with Sections	Tax Rate	Tax Rate (Effective 1 Jan 16)	Tax Rate (Effective 1 Apr 16)
Interest, commission, fee or other payment in connection with any loan or indebtedness	9(4) and 35(2)	15%	No change	No change
Royalties, lump sum payments or otherwise for use of movable properties	9(5)(a) and 35(3)	10%	No change	No change
Payment for use of the or the right to use scientific, technical, industrial or commercial knowledge or information	9(5)(b) and 35(3)	10%	No change	No change

IMPORT, EXPORT AND TAXATION

Nature of payment	Section 37 read with Sections	Tax Rate	Tax Rate (Effective 1 Jan 16)	Tax Rate (Effective 1 Apr 16)
Payment for rendering assistance or services in connection with the application or use of scientific, technical, industrial or commercial knowledge or information	9(5)(ba)* and 35(6)	20%	10%	No change
Payment for the management or assistance in the management of any business	9(5)(c) and 37A	20%	15%	10%
Rent or other payments for the use of movable property	9(5)(d) and 35(2A)	10%	No change	No change
Non-resident directors' remuneration	37B	20%	10%	No change

** The gazette amendment to the Income Tax Act relating to these changes once it is available.*

As stated above, Pioneer Status (upon successful application):

- Provides exemption from paying Corporate Income Tax, Import Duties on Raw Materials, Equipment and Machinery
- Lasts for a period of up to 5 years (with further extensions of 3 + 3 years possible)
- Does not include exemption on Excise Duties

IMPORT, EXPORT AND TAXATION

What is the possibility of receiving financing assistance for a project?

There are a number of local banks that offer financing, subject to their assessment of the proposed project. The project can also be offered to the Government's investment arm, Strategic Development Capital Fund (SDC), Ministry of Finance and Economy who, depending on their evaluation, can provide equity to the project.

Co-Investment partnership is available with other existing companies including both Government linked & local private companies.

Are there any import restrictions in Brunei Darussalam?

Brunei Darussalam imposes restrictions/prohibitions on the import of certain goods under the Customs Order 2006 (Section 31). Imports and manufacture of alcohol and alcohol products are restricted for religious reasons under the Customs (Prohibition and Restriction of Imports and Exports) Amended Order 1990.

Import and export procedure can be found here: <https://www.mofe.gov.bn/Customs/Import-and-Export-Procedures.aspx>

Importers of halal meat and food products need prior approval from the Ministry of Religious Affairs. Prior to approval, inspection of the foreign plant facilities will be carried out by two officers from the Religious Affairs Department. Importers have to pay for the trip. Currently only selected approved plants in Australia, Malaysia and India are accredited to supply halal beef.

More information can be found here:

<https://www.export.gov/apex/article2?id=Brunei-Prohibited-Restricted-Imports>

LOGISTICAL SERVICES

Where is the ferry terminal?

The ferry terminal located in Serasa and is a passenger terminal for Labuan, Lawas and Sundar, Malaysia.

What is the average local trucking rates from Industrial Park to main seaport?

- Serasa Industrial Site to the main seaport : B\$60.00 - B\$80.00 per trip (3km apart)
- SPARK Industrial Site to the main seaport : B\$230.00 - B\$280.00 per trip (105 km apart)

Brunei Darussalam's main sea port is Muara Port. These charges are negotiable depending on the client's total volume, frequency and service provider.

What is the cost of exporting a container from Brunei Darussalam via sea freight?

Destination	20' GP	40' GP	20' RF	40' RF	Transit Time in days
	USD	USD	USD	USD	
Hong Kong, China	210	320	1,120	1,325	9 - 12 days
Port Klang, Malaysia	217	289	1,301	2,096	10 days
Incheon, South Korea	450	800	1,300	1,500	18 days
Guangzhou, China	460	720	1,420	1,625	13 - 15 days
Singapore	469	758	830	1,083	11 days
Ho Chi Minh, Vietnam	560	820	1,250	1,450	14 days

LOGISTICAL SERVICES

Charges in BND	20' GP	40' GP	20' RF	40' RF
Local Terminal Handling Charge	182	270	237	351
Container Seal Fee	15			
Bill of Lading (BL) Fee	80 per BL			
Bill of Lading (BL) Surrender Fee	80 per BL			
Amendment Fee (if requested)	80 per BL			

Terms and Conditions:

- The rates are subject to local Terminal Handling Charge (THC) and documentation fee.
- Rates are subject to any new surcharge announced at time of shipment.
- Rates are under Free on Board (FOB) and for Non-Dangerous Goods (Non-DG) cargo only.
- The above does not include custom duties, stuffing, unstuffing, post store rent, marine insurance and etc.
- The rates above are subject to validity period.

What is Brunei International Air Cargo Centre (BIACC) and its total storage capacity?

Brunei International Air Cargo Centre (BIACC) is a Government-Linked Company whose main business mainly handles air cargo at the Brunei International Airport. Currently, BIACC has a total warehouse storage capacity of 334 tons of which up to 67 tons are reserved for perishable/refrigerated goods. BIACC currently acquires the following international certification standards: ISO 9001, OHSAS 18001, ISAGO.



LOGISTICAL SERVICES

How many shipping lines are connected to Muara Port?

There are a total of 7 shipping lines with direct connectivity to 12 ports regionally. The ports of call include Port of Singapore; Port of Shekou (China); Port of Hong Kong; Port Klang; Port of Kaoshiung (China); Port of Nansha (China); Kota Kinabalu, Kuching, Labuan, Bintulu, Pasir Gudang (Malaysia) and Cebu (Philippines). For shipping schedule & vessel capacity please refer to the following table:

Shipping Line	Shipping Route	Sailing Frequency	Day	Vessel Capacity (TEU)
Evergreen Marine Line	Kota Kinabalu - Muara - Bintulu - Shekou - Hong Kong - Kaohsiung	Weekly	Tues	1700
Pacific International Lines	Labuan - Bintulu - Port Klang - Singapore - Muara - Kota Kinabalu	Biweekly	Sun	1750
MTT Shipping	Singapore - Port Klang - Muara - Kota Kinabalu - Labuan - Bintulu	Biweekly	Sun	1500
MCC Transport	Bintulu - Muara - Cebu City	Weekly	Thurs	1100
Harbour Link Lines Ltd	Hong Kong - Nansha - Kota Kinabalu - Muara - Kuching	Biweekly	Thurs	735
Harbour Link Lines Ltd	Pasir Gudang - Port Klang - Singapore - Muara - Kota Kinabalu - Bintulu	Biweekly	Sat	735
Advance Mariner Line	Pasir Gudang - Port Klang - Singapore - Muara - Kota Kinabalu - Bintulu	Biweekly	Sat	998

Want to invest in Brunei Darussalam?

Contact us

FDI Action & Support Centre (FAST)
Brunei Economic Development Board (BEDB)

Level 4, Commonwealth Drive,
Ministry of Finance and Economy

Email: info@invest.gov.bn

Tel: +673 2230111

Website: www.invest.gov.bn

